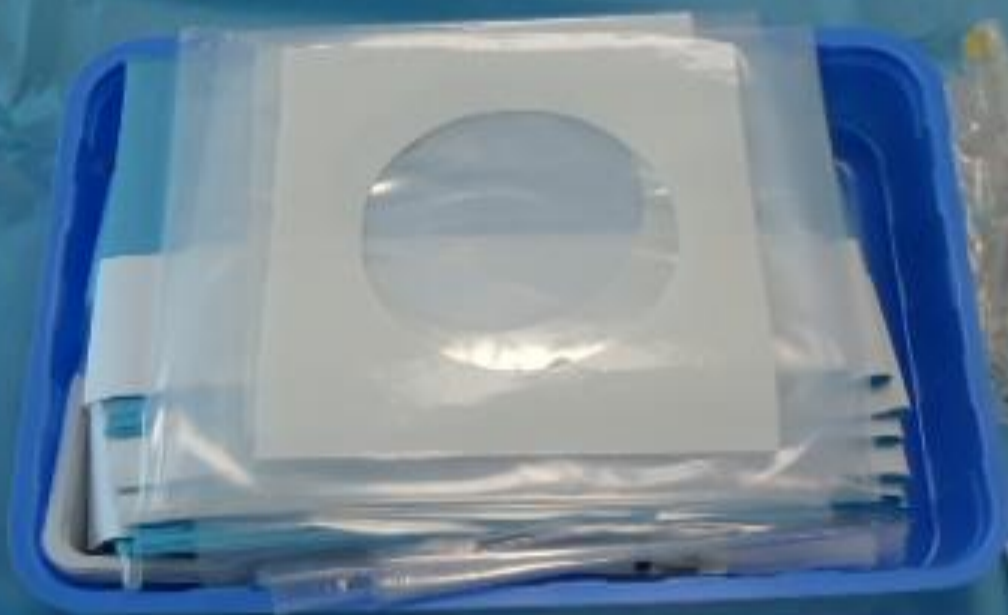




# Tunnelled line insertion

Ioannis Griveas





ELIZABETH RENAL UNIT

13/05/11 10:10:5

P80 9MHz 739

GE





























GE



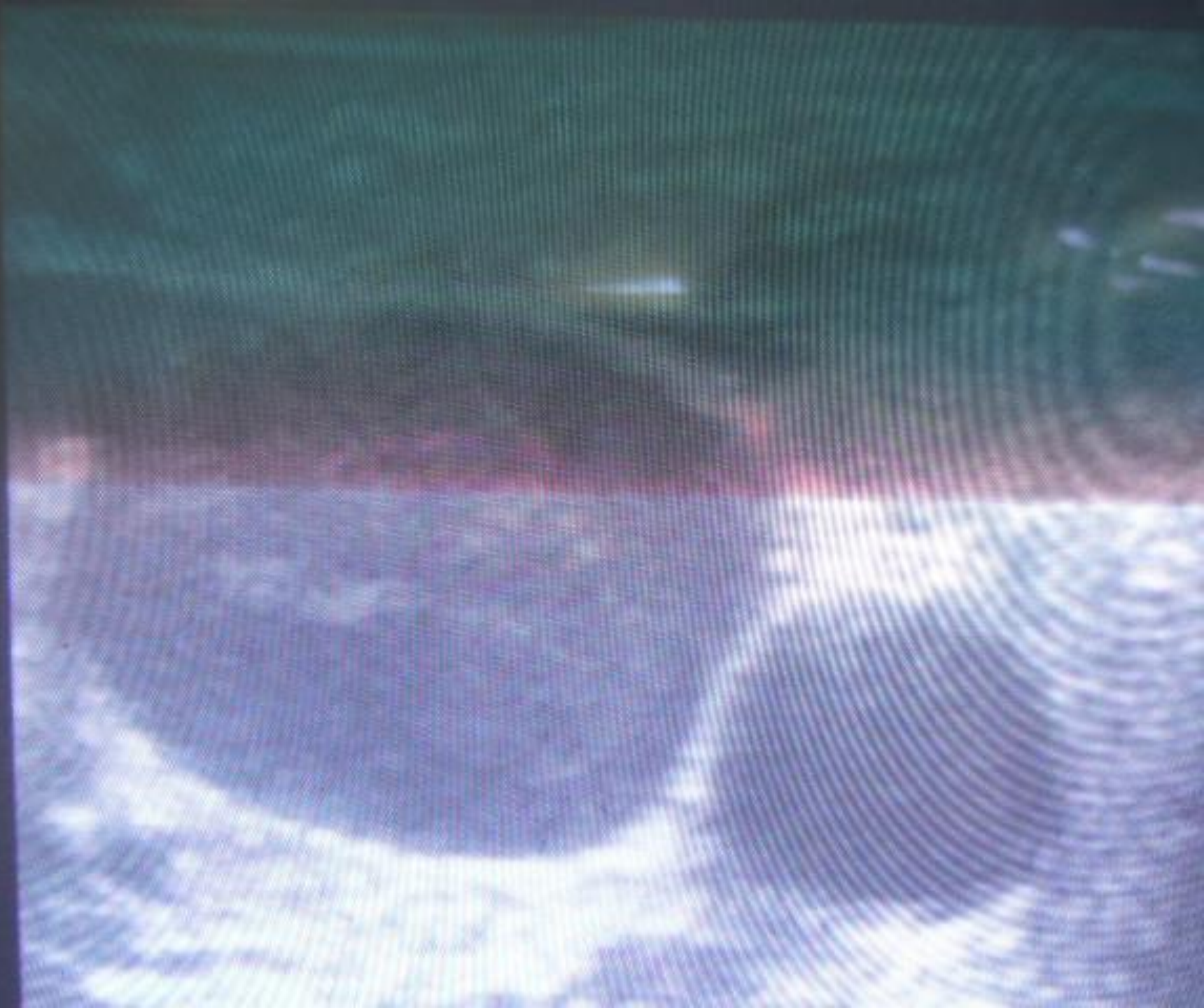




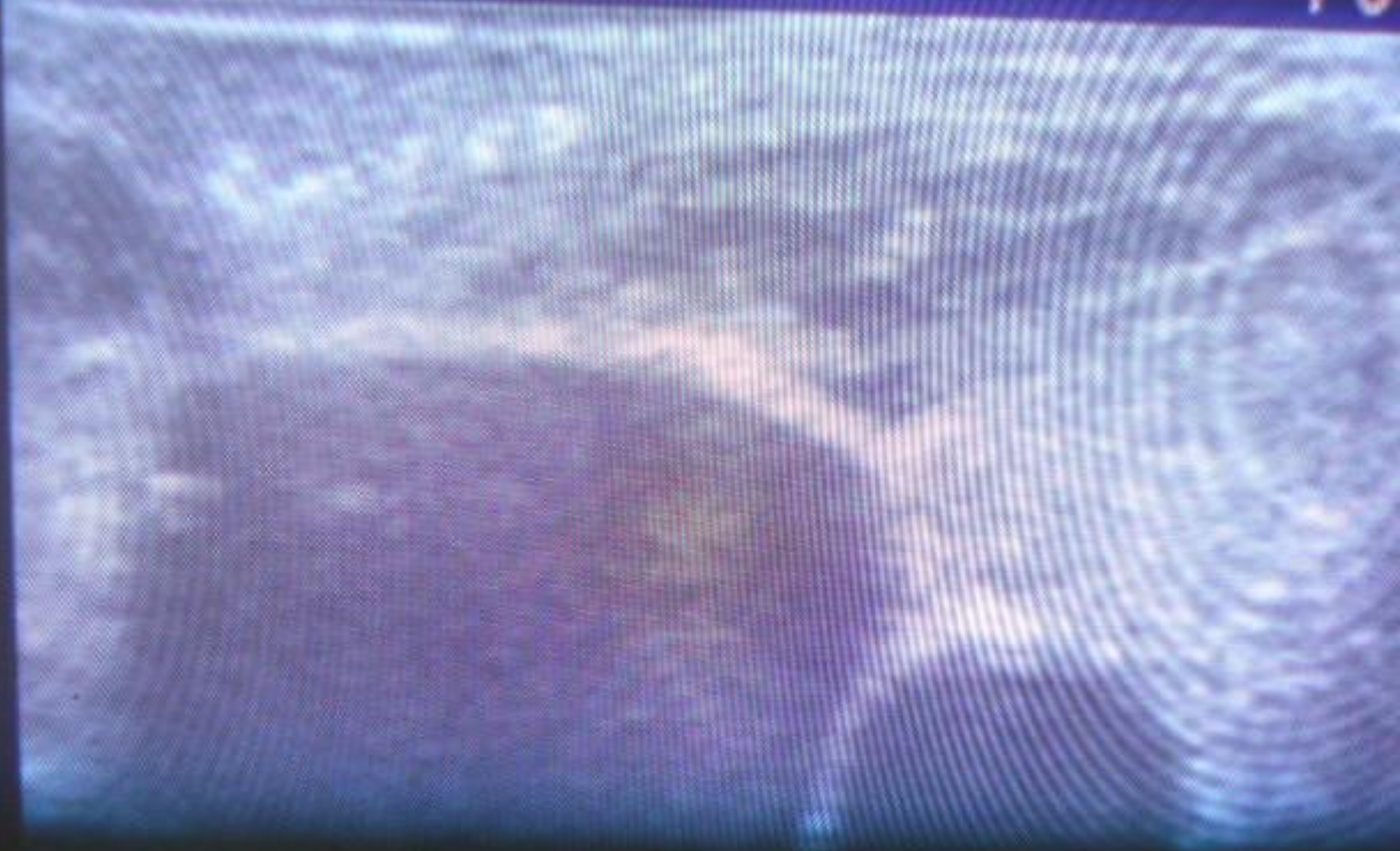


GE





SE





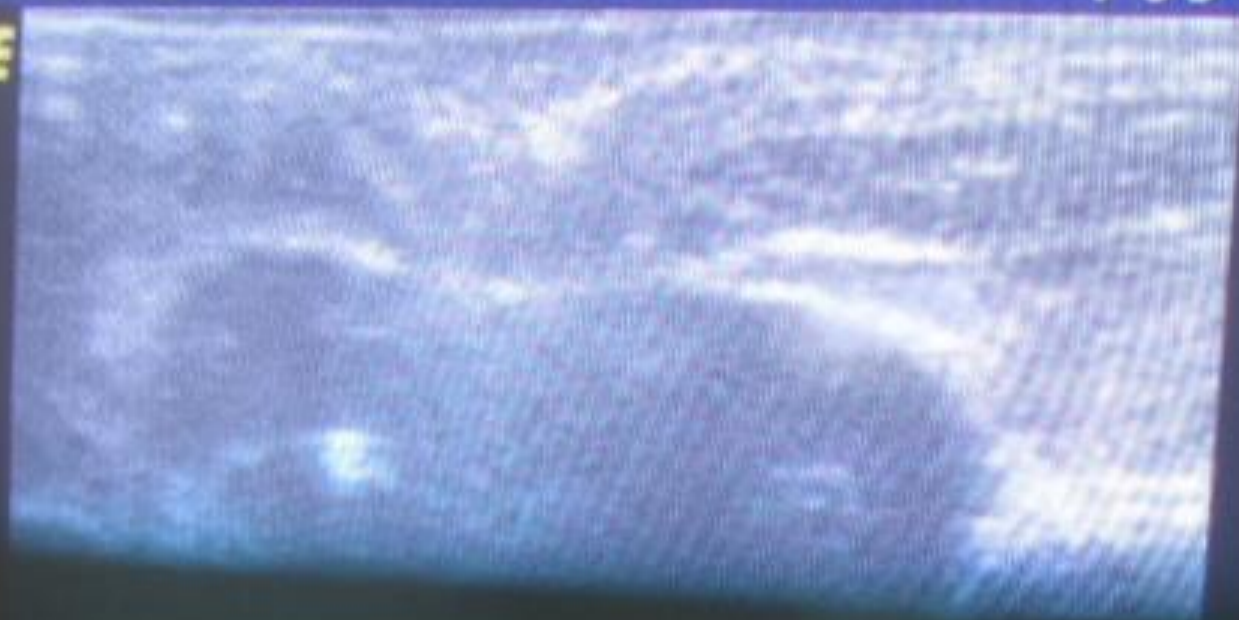
LIZABETH RENAL UNIT

13/05/11 10:

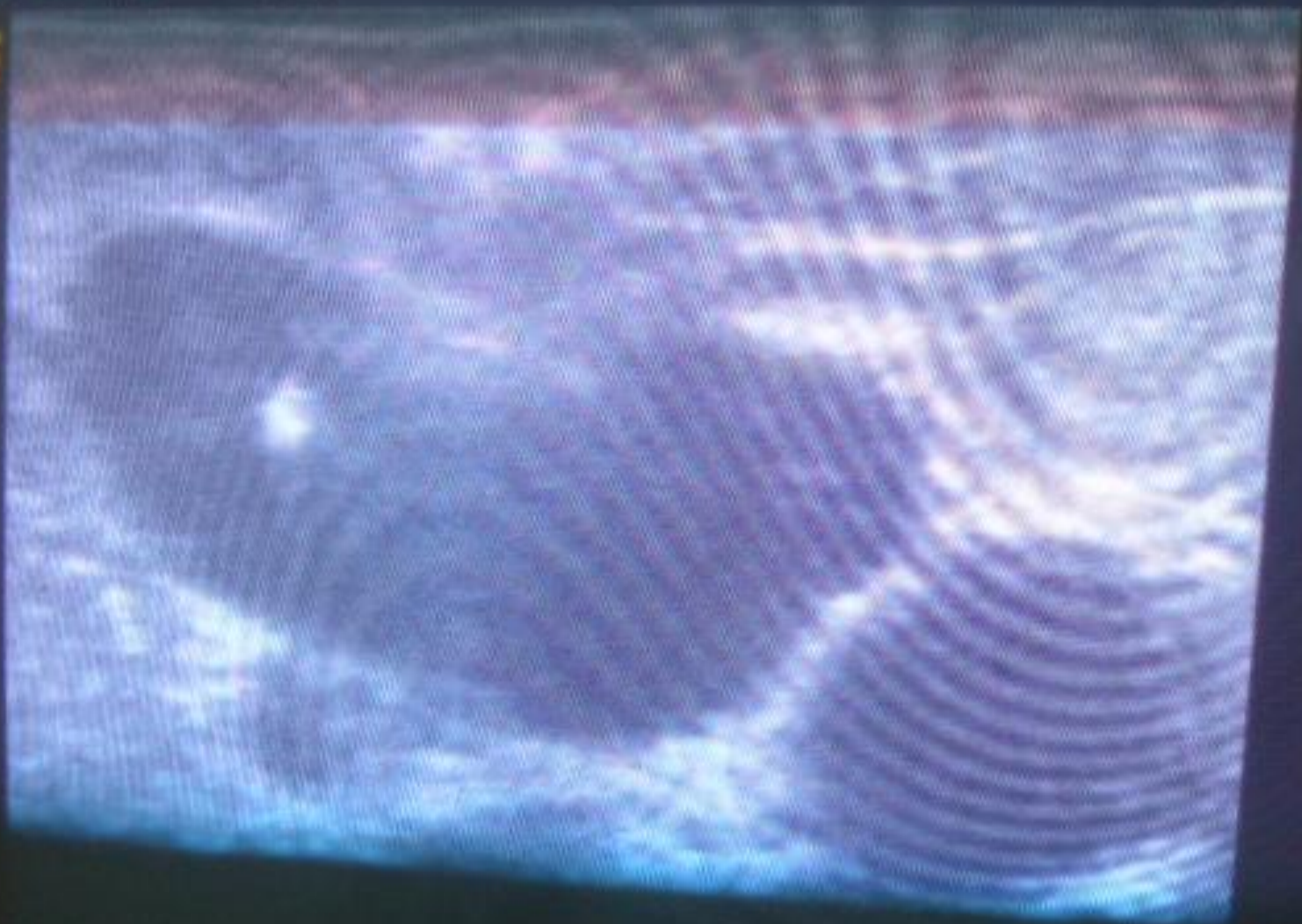
P80

9MHz

GE



GE







































































































































































Syringe  
SPUT CATH III







